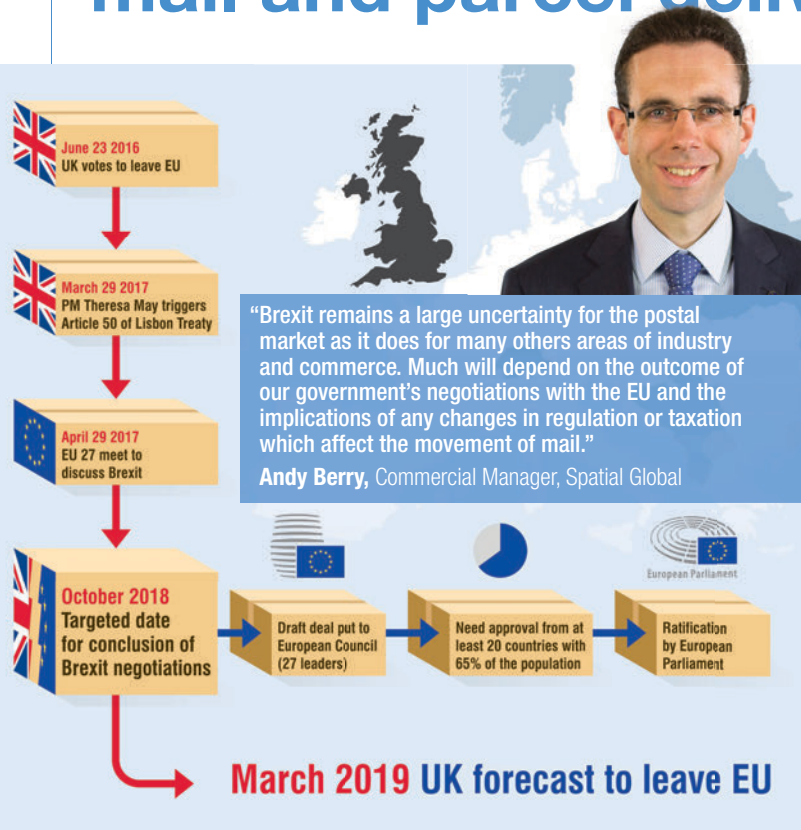


GLOBAL NAVIGATOR

Autumn 2018

How will Brexit impact on international mail and parcel deliveries?



The goal for October 2018 is to finalise a withdrawal treaty governing the UK’s departure from the EU as well as a political framework agreement covering the future relationship between the two entities. What this means and what it will finally look like nobody can be sure, but as the October deadline looms closer, Spatial Global, like its clients, needs to plan for the worst and hope for the best.

According to www.parliament.uk, the UK website featuring the latest news from the House of Commons and House of Lords:

“Non-participation in the EU’s cross border parcel delivery regime will have little impact on UK stakeholders. However, leaving the customs union and the single market will potentially lead to customs duties, border formalities, and import VAT being applied to parcel deliveries between the UK and the EU (and vice-versa), which would lead to slower delivery times and increased costs for businesses and consumers.”

No one can exactly pinpoint how Brexit will affect parcel delivery between the UK and Europe, but what appears to be clear is that slower parcel delivery times are highly likely. Plus, it’s expected that any item worth over a value of £15 will be liable to VAT. The price of VAT may even be approximately 20% of the total value of the item. This could have a significant impact on UK based ecommerce brands.

You can be sure that we’ll keep you informed as soon as the facts are available.

East Midlands Airport Growth Forum

Spatial Global acts as industry representative for East Midlands Transport and Logistics at East Midlands Airport Growth Forum.

Baroness Sugg visited the airport to understand more about its potential and to meet business leaders to discuss how EMA could better serve them with possible new international connections.

Spatial Global’s Rachel Morley was acting as the industry representative for Transport and Logistics within the region, and was invited to participate in discussions on the future growth and the role of East Midlands Airport within the growing regional economy.

“There are huge development plans surrounding East Midlands Airport, the East Midlands Gateway, HS2 developments and the potential plans for 2025 when the Ratcliffe on Soar Power Station is decommissioned. The region’s businesses are perfectly positioned to take advantage of the enormous potential benefits this will bring to the local economy.”



East Midlands Airport welcomed UK Aviation Minister Baroness Sugg on 5 July 2018, with the minister pictured here at the top of the airport’s control tower with Karen Smart, Managing Director of East Midlands Airport.

Confidential Project Cargo



How do you ship the components for aircraft hangar doors in excess of 40 metres high with a span more than half a kilometre?

Confidential Project Cargo

The logistical challenges of transporting everything from heavy steel fabrications to delicate electrical systems and architectural finishes halfway around the world are immense. Jewers Doors' client list includes military; overseas royalty; executive jet companies and commercial airlines – so it's vital that any logistical mistakes are eliminated and potential delays avoided. Jewers Doors is currently shipping a high profile bespoke door solution to the Southern Hemisphere – and is once again utilising the services of Spatial Global to ship materials for this prestigious project.

Highly capable and discrete project cargo partner

Jonathan Jewers, Director, Jewers Doors says: "Most of our projects are confidential, such is the case with this current project – the customer is inter-governmental, multi-national and the completed project will be of global significance. Our project cargo partners need to be leaders in their field and capable of operating at the highest levels of confidentiality."

"The freight forwarding team needs to understand what is being shipped, the clients and the processes involved in each destination country and transit port to ensure

that delays don't occur. For these reasons, Jewers Doors has a long-standing relationship with Spatial Global and relies on their team for a fast and efficient service. Their team has an unrivalled understanding and appreciation of what Jewers Doors needs when transporting our exported solutions."

Managing Confidential Project Cargo – whatever the challenges

Jewers Doors Limited is a family-owned business, designing and manufacturing specialist industrial doors and aircraft hangar doors worldwide. With a manufacturing facility and headquarters in Bedfordshire, the company relies on efficient transportation of materials and components, often large and heavy, to destinations worldwide including the Middle East, Australasia and South America.

Confidential Project Cargo needs great planning!

"Ensuring the container equipment is available and we can meet the delivery schedule requires complex planning and a very hands-on approach. To ensure any Project Cargo is handled responsibly means we need to get involved from the instant our client first gets the order."

Rachel Morley,
General Manager Operations, Spatial Global

British Tinnitus Association celebrates 100 Support Groups Landmark

To celebrate this milestone, they sent commemorative mugs to their key supporters to link in with a campaign called 'Tea for Tinnitus'.



The challenges of packing and mailing promotional ceramic mugs

The mugs looked great, everyone agreed they were the perfect practical promotional gift to send to the key supporters to celebrate the 100 groups milestone – the only challenge was 'How do we get them to the intended recipient without them getting damaged?' Lucky for BTA, Julie Birch, Spatial Global's Mail Sales Executive is somewhat of an expert on this specific area, having spent many years in dealing with promotional merchandise.

Cost savings on postage of the 396 ceramic mugs was optimised for economy
Spatial Global was able to help BTA minimise their postage costs as the corporate members mugs were individually mailed out. The packaging solution implemented was a complete success and the mission was accomplished. What's more, they arrived in time for the 'Tea for Tinnitus' campaign.

If you have a mailing challenge, why not give us a call?

As experts in bulk mailing for business, publications and packages for both the domestic UK market and overseas mailings, Spatial Global have experts who can advise you on the most cost effective route to get what you want to send, to the audience you want to receive it.

PPA Awards Night

The PPA Awards are presented annually by the Professional Publishers Association (PPA) to recognise and reward excellence in the sector.



This year Spatial Global's Executive Chairman, Mike Wallis, presented the award to the two winners of the 'PPA Publishing Innovator Of The Year', an award for those businesses with an annual turnover under £10m. There were two finalists, one for business media and one for consumer media.

Spatial Global supporting the PPA

Spatial Global has become an associate member of the Professional Publishers Association. The PPA is the association for publishers and providers of consumer and business media in the UK. Its role is to promote and protect the interests of the industry and member companies.

Why the PPA is important to Spatial Global

Just as TV was predicted to kill off radio, the internet was forecast to ring the doomsday bell for print publishing. However, although it has had an impact there is no doubting the benefits magazines continue to deliver in this 'internet age.' As much of publishing is driven by advertising and subscription, quality printed magazines continue to have the reach, trust and demand more attention than their competing digital media formats. Which is why the PPA is important to the industry, as it shares best practice by recognising and rewarding innovation.

Spatial Global is proud to serve the publishing sector

The publishing sector has been under tremendous pressures to adapt to a changing and fast evolving digital media landscape for more than two decades now. Spatial Global is proud to serve the publishing sector and help this great industry develop ways to ensure their readers can continue to access printed publications.

Spatial Global working on pilot of HMRC's Fulfilment House Due Diligence Scheme

An additional administrative burden and new obligations on goods imported from outside the EU.



HMRC's Fulfilment House Due Diligence Scheme will add administrative burden and new obligations on any company or individual storing goods which are imported for sale online. This is because HMRC believes £1.5bn of VAT and Customs duty is not being paid in relation to large amounts of e-commerce taking place under the radar, with fulfilment houses being used by unscrupulous retailers based outside the EU. The Fulfilment House Due Diligence Scheme is designed to clamp down on what has to date been a largely unregulated sector.

Businesses have an obligation to register under the Fulfilment House Due Diligence scheme

Introduced on 1 April 2018, businesses now have an obligation to register under the Fulfilment House Due Diligence scheme if they store goods in the UK which (a) have been imported from outside the EU, (b) are owned by (or on behalf of) someone who is established outside the EU and (c) the goods are being offered for sale and have not been sold in the UK before.

Spatial Global are registered and actively consulting with HMRC

So far, response to the registration has been limited, however HMRC are keen to receive responses from companies explaining why some of the measures they are suggesting won't work. Which is why Spatial Global is registered and actively consulting with HMRC on the practicalities of the proposal.

Demand in growth set to outpace Cargo fleet during 2018-2019

An insight to the forecasts for container trade and regional port volumes by a leading independent provider of research to the maritime sector has predicted slow and steady recovery for container shipping.



Are higher freight rates potentially on the way?

The outlook for the container shipping market in 2018 and 2019 is for a healthy growth in demand that will outpace the fleet capacity. This is expected to result in a better supply-demand balance and slightly higher freight rates and profits for carriers, according to shipping consultancy Drewry.

"The top-heavy delivery schedule for 2018 with the majority of ULCVs being delivered in the first quarter has depressed our supply-demand index, but the balance will improve as the year progresses."

Simon Heaney, Senior Manager, Drewry

Think you might be paying too much shipping by sea freight?

How do you know if you're minimising any cost fluctuations due to shifting tariffs – currency or market rates? Selecting the best route and transport options? Manage connecting services cost effectively? Have the best packaging solution? Or getting the best customs documentation solution?

Hidden costs are difficult to spot unless you're an expert. If you want to find the best UK freight forwarder for your business – then visit www.spatialglobal.com/freight-forwarding/free-import-export-audit

Spatial Global Finalist for the Chamber's Derbyshire and Leicestershire Business Awards 2018



These awards – created purely by business, for business – celebrate and showcase the successes that have taken place in the East Midlands business community over the past year.

"What we do is solve a variety of challenges our clients face, to ensure their customers get the right product, on time and in the best condition – anywhere in the world. Which is why it's great to be recognised by the region's businesses as leader in the field of International Trade."

Mike Wallis, LLB, FCILT
Executive Chairman, Spatial Global

The finalists were announced at the President's Summer Celebration on 28 June. Category winners will be announced at the glittering Awards Ceremonies: Derbyshire Business Awards on Friday 7 September 2018 at Derby County Football Club from 6.30pm and Leicestershire Business Awards on Friday 21 September 2018 at The Athena from 6.30pm.

New Customs Software Launched – what will CDS mean for your imports and exports?

August saw the beginning of a phased launch of the Customs Declaration Service (CDS) – CDS will replace the existing Customs Handling of Import and Export Freight (CHIEF) system, with all declarations taking place on CDS from early 2019.

Customs Handling of Import and Export Freight (CHIEF) system

CHIEF currently processes declarations to facilitate the international movement of goods between the UK and non-EU countries. It allows importers, exporters and freight forwarders to complete customs information electronically, and automatically checks for entry errors. The system is responsible for

processing declarations for goods entering and leaving the UK or EU through ports and airports and calculating the correct amount of duty and taxes.

The decision to replace CHIEF with CDS was made before the EU referendum, however CDS will be scaled to handle any potential increases in the volume of declarations that may result from the UK's exit from the EU.



